

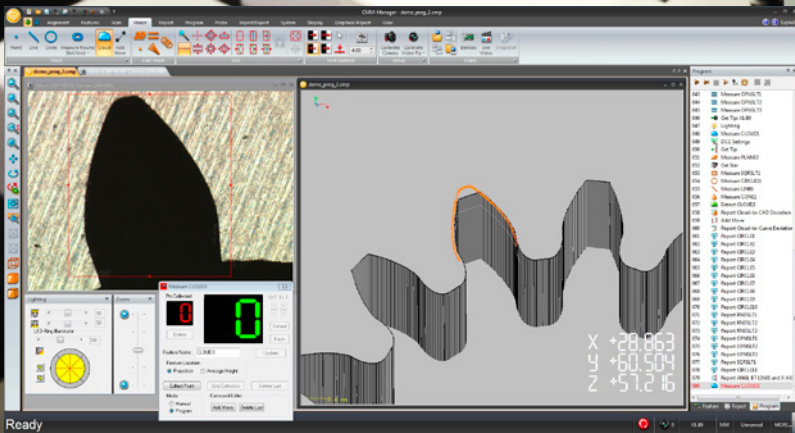


CMM-Manager for iNexiv

Expand the capabilities of
multi-sensor measurement

iNEXIV

Nikon
VMA-2520



Nikon
100th
anniversary

NIKON METROLOGY | VISION BEYOND PRECISION

EASY TO USE, RICH FUNCTIONALITIES

Expand your 3D tactile and video measuring capabilities with CMM-Manager, now available on Nikon iNEXIV hardware.

CMM-Manager is task-oriented, highly intuitive and offers powerful measuring and reporting capabilities. Main features are collision-free CAD-based path definition, virtual path simulation and accurate feature measurement for both tactile and vision probing.

BENEFITS

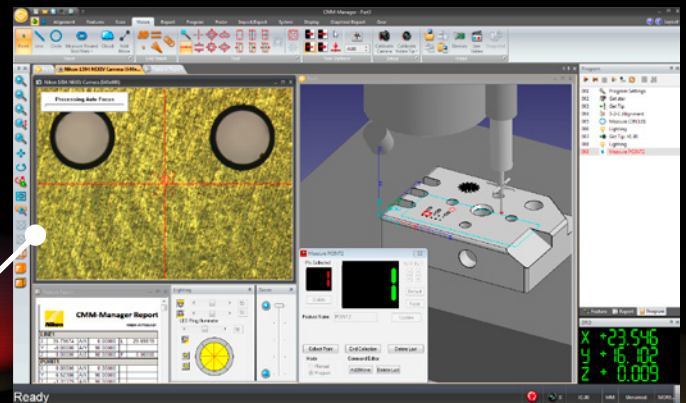
Intuitive - Task-oriented, user-friendly interface

Easy - Drag and drop program structure

Powerful - CAD based alignment, programming, measurement & reporting

Flexible - Unified CMM, arm & vision software

True 3D multi-sensor - Vision / Laser AF / Tactile / Rotary indexer



Multi-sensor 3D CAD collision-free measurement

CMM-Manager integrates vision measuring, autofocus laser scanning, touch probing and rotary indexing to provide a true 3D multi-sensor system for inspecting physical products based on CAD models.

Vision

Large Field-of-View, fast and accurate autofocus, edge detection, point filtering and versatile illumination.

Laser

High speed, high accuracy height measurement, regardless of video magnification.

Rotary indexer

Better tactile or vision probe accessibility for measuring round items.



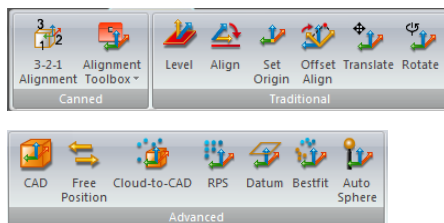
Tactile

TP20 or TP200 touch probes to measure 3D surfaces or features that the vision camera cannot access.

ALIGN, MEASURE, REPORT, RUN...

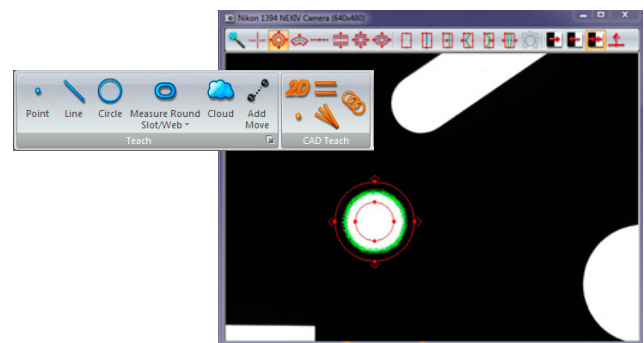
Complete alignment toolbox

- Canned alignments for simple part geometry
- Advanced alignments for any part regardless of complexity or geometry.
- Create alignment from features measured by touch probe, vision sensor or laser AF
- CAD import
 - 2D DXF / IGES
 - 3D IGES / STEP
 - 3D Native formats



Efficient measurements

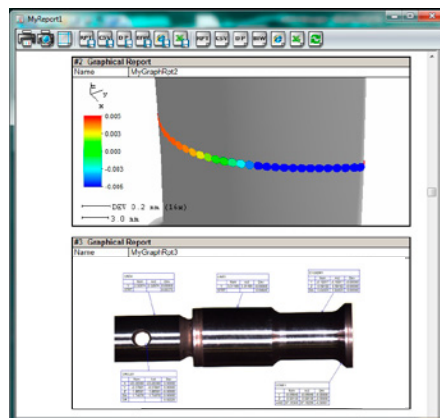
- Pick CAD features to create collision-free probe paths for tactile and vision measurements.
- Seamless transition from touch probe, vision probe and laser AF measurements
- Optimize measurement routine by drag-n-drop program editing



Extensive reporting

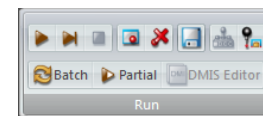
Print, save or output reports to external systems such as SPC software.

- Excel, PDF, Text, HTML, CSV
- 3D Color Graphical Reports
- Cross section analysis
- GD&T - ASME Y14.5 2009



Automated program execution

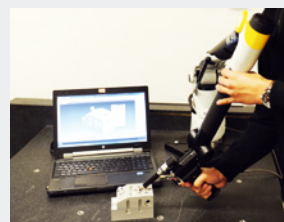
- Batch execution for multi-part inspection
- Automated measurement for parts arranged in rectangular grid
- Create custom program library with Shop Floor Launcher



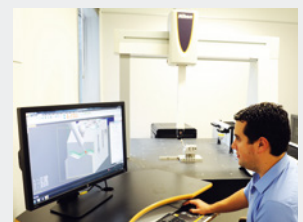
CMM-Manager – A multi-platform metrology software

Many metrology laboratories have an extensive set of equipment and have a need for a unified software. CMM-Manager is now available for iNexiv equipment, but can also be used on articulated arms, manual and CNC CMMs. This multi-platform use facilitates operator training, data exchange and software support.

Information on CMM-Manager capabilities and the supported systems can be found on www.CMMmanager.com

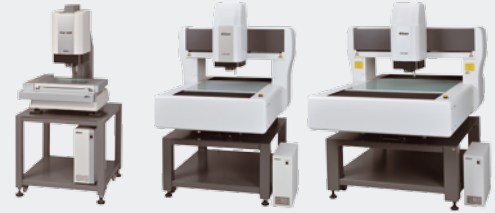


MCAx articulated measuring arm



Altera coordinate measuring machine

SPECIFICATIONS



	VMA-2520	VMA-4540	VMA-6555
Stroke XYZ (mm) with TP20 with TP200	250 x 200 x 200 200 x 200 x 166 200 x 200 x 170	450 x 400 x 200 400 x 400 x 166 400 x 400 x 270	650 x 550 x 200 600 x 550 x 166 600 x 550 x 170
Max. permissible error ¹ EUX,MPE EUY,MPE EUXY,MPE Euz,MPE (L = Length in mm)	2+8L/1000 µm 3+8L/1000 µm 3+L/50 µm	2+6L/1000 µm 3+6L/1000 µm 3+L/100 µm	
Available probing	2D Vision (color or B&W) Laser AF (Z depth) ² Tactile probe - TP20 / TP200		
Illumination Contour illumination Surface illumination Oblique illumination	White LED diascope illumination White LED episcopic illumination 8-segment white LED ring illumination		
Optional accessories	MCR20 Probe rack Rotary indexer Gear evaluation software		

¹ Nikon's in-house test at 20°C ±0.5k

² Laser AF is a Class 1 Laser Product

Full specifications are available in iNEXIV VMA-series brochure

Applications

- Sheet metal parts
- Mechanical parts
- Plastic molded and rubber parts
- Implants
- Watch components, gears
- Connectors
- PCB's, lead frames, semiconductor, MEMS



NIKON METROLOGY NV

Geldenaaksebaan 329
B-3001 Leuven, Belgium
phone: +32 16 74 01 00 fax: +32 16 74 01 03
Sales.NM@nikon.com

NIKON METROLOGY EUROPE NV
tel. +32 16 74 01 01
Sales.Europe.NM@nikon.com

NIKON METROLOGY GMBH
tel. +49 6023 91733-0
Sales.Germany.NM@nikon.com

NIKON METROLOGY SARL
tel. +33 1 60 86 09 76
Sales.France.NM@nikon.com

NIKON METROLOGY, INC.
tel. +1 810 2204360
Sales.US.NM@nikon.com

NIKON METROLOGY UK LTD.
tel. +44 1332 811349
Sales.UK.NM@nikon.com

NIKON CORPORATION

Shinagawa Intercity Tower C, 2-15-3, Konan,
Minato-ku, Tokyo 108-6290 Japan
Telephone: +81-3-6433-3701 Fax: +81-3-6433-3784
www.nikon.com/products/industrial-metrology/

NIKON INSTRUMENTS (SHANGHAI) CO. LTD.
Tel.: +86 21 5836 0050
Tel.: +86 10 5869 2255 (Beijing office)
Tel.: +86 20 3882 0550 (Guangzhou office)

NIKON SINGAPORE PTE. LTD.
Tel.: +65 6559 3618
nsg.industrial-sales@nikon.com

NIKON MALAYSIA SDN. BHD.
Tel.: +60 3 7809 3609

NIKON INSTRUMENTS KOREA CO. LTD.
Tel.: +82 2 2186 8400

ISO 14001 Certified
for NIKON CORPORATION

ISO 9001 Certified
for NIKON CORPORATION
Microscope Solutions Business Unit
Industrial Metrology Business Unit

More offices and resellers at www.nikonmetrology.com